

Conductor

Invercargill

ALEXANDER FRAME LITHGOW (1870 - 1929)

Arranged by **JOAN THORP**

Duration 2:30

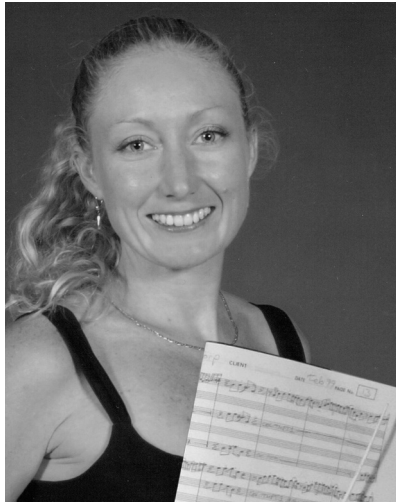
INSTRUMENTATION

- 1 - Conductor
- 8 - Flute
- 1 - Oboe
- 5 - Clarinet 1
- 5 - Clarinet 2
- 2 - Bass Clarinet
- 3 - Alto Saxophone 1
- 3 - Alto Saxophone 2
- 2 - Tenor Saxophone
- 1 - Baritone Saxophone
- 4 - Trumpet 1
- 4 - Trumpet 2
- 2 - Horn in F
- 8 - Trombone/Baritone B.C./Bassoon/Bass
- 2 - Baritone T.C.
- 2 - Tuba
- 2 - Crash Cymbals
- 2 - Snare Drum
- 2 - Bass Drum
- 2 - Timpani
- 2 - Glockenspiel

THORP MUSIC PTY LTD

P.O. Box 6464, Tweed Heads South, NSW, 2486, AUSTRALIA.

Phone: (02) 9544 3420 Fax: (02) 9475 0307 Email: sales@thorpmusic.com Web: www.thorpmusic.com



JOAN THORP IS A SYDNEY-BASED MUSICIAN, TEACHER, CONDUCTOR AND ARRANGER WITH 15 YEARS PROFESSIONAL EXPERIENCE.

TO HER PERFORMING CREDITS SHE HAS AN ATCL FRENCH HORN DIPLOMA PLUS STATE AND NATIONAL CHAMPIONSHIP TITLES FROM THE NATIONAL BAND ASSOCIATION.

JOAN IS AN ACCREDITED MEMBER OF THE AUSTRALIAN MUSIC TEACHERS' ASSOCIATION, THE AUSTRALIAN BAND AND ORCHESTRA DIRECTORS' ASSOCIATION AND THE MUSIC ARRANGERS' GUILD OF AUSTRALIA AND HAS AN AMUSA THEORY OF MUSIC DIPLOMA.

JOAN CONDUCTS SEVERAL PRIMARY AND HIGH SCHOOL BANDS PLUS THE PROFESSIONAL CORPORATE FUNCTION BANDS, ABRACADABRA AND ALAKAZAM.

AS THE MANAGING DIRECTOR, SHE IS ESPECIALLY PROUD OF THORP MUSIC'S HIGH QUALITY PUBLICATIONS – UTILISING PROGRESSIVE MUSICAL CONCEPTS WITHOUT COMPROMISING ON ENTERTAINMENT VALUE.

Invercargill

ALEXANDER FRAME LITHGOW (1870 - 1929)
Arranged by JOAN THORP

March ♩ = 110

5

Flute
Oboe
Glockenspiel
(Part 1)

Flute
Oboe
Glockenspiel
(Part 1 - Easier)

Clarinet 1
(Part 1)

Clarinet 1
(Part 1 - Easier)

Clarinet 2
(Part 2)

Clarinet 2
(Part 2 - Easier)

Alto Saxophone 1
(Part 2)

Alto Saxophone 1
(Part 2 - Easier)

Alto Saxophone 2
(Part 3)

Alto Saxophone 2
(Part 3 - Easier)

Tenor Saxophone
(Part 3)

Tenor Saxophone
(Part 3 - Easier)

Trumpet 1
(Part 1)

Trumpet 1
(Part 1 - Easier)

Trumpet 2
(Part 2)

Trumpet 2
(Part 2 - Easier)

Horn in F
(Part 3)

Horn in F
(Part 3 - Easier)

Low Woodwinds/
Low Brass/
Bass
(Part 4)

Crash Cymbals

Snare Drum

Bass Drum

Timpani
F, Bb, C

ff *mf* *ff* *mf* *ff* *mf* *ff* *mf*

2 3 4 5 6 7 8

Flute
Oboe
Glock.
(Part 1)

Fl.
Oboe
Glock.
(Part 1 - Easier)

Cl. 1
(Part 1)

Cl. 1
(Part 1 - Easier)

Cl. 2
(Part 2)

Cl. 2
(Part 2 - Easier)

Alto Sax. 1
(Part 2)

Alto Sax. 1
(Part 2 - Easier)

Alto Sax. 2
(Part 3)

Alto Sax. 2
(Part 3 - Easier)

Ten. Sax.
(Part 3)

Ten. Sax.
(Part 3 - Easier)

Tpt. 1
(Part 1)

Tpt. 1
(Part 1 - Easier)

Tpt. 2
(Part 2)

Tpt. 2
(Part 2 - Easier)

Hn.
(Part 3)

Hn.
(Part 3 - Easier)

Low W.W./
Low Brass/
Bass
(Part 4)

Cym.

S. D.

B. D.

Timp.

Flute
Oboe
Glock.
(Part 1)

Fl.
Oboe
Glock.
(Part 1 - Easier)

Cl. 1
(Part 1)

Cl. 1
(Part 1 - Easier)

Cl. 2
(Part 2)

Cl. 2
(Part 2 - Easier)

Alto Sax. 1
(Part 2)

Alto Sax. 1
(Part 2 - Easier)

Alto Sax. 2
(Part 3)

Alto Sax. 2
(Part 3 - Easier)

Ten. Sax.
(Part 3)

Ten. Sax.
(Part 3 - Easier)

Tpt. 1
(Part 1)

Tpt. 1
(Part 1 - Easier)

Tpt. 2
(Part 2)

Tpt. 2
(Part 2 - Easier)

Hn.
(Part 3)

Hn.
(Part 3 - Easier)

Low W.W./
Low Brass/
Bass
(Part 4)

Cym.

S. D.

B. D.

Timp.

Flute
Oboe
Glock.
(Part 1)

Fl.
Oboe
Glock.
(Part 1 - Easier)

Cl. 1
(Part 1)

Cl. 1
(Part 1 - Easier)

Cl. 2
(Part 2)

Cl. 2
(Part 2 - Easier)

Alto Sax. 1
(Part 2)

Alto Sax. 1
(Part 2 - Easier)

Alto Sax. 2
(Part 3)

Alto Sax. 2
(Part 3 - Easier)

Ten. Sax.
(Part 3)

Ten. Sax.
(Part 3 - Easier)

Tpt. 1
(Part 1)

Tpt. 1
(Part 1 - Easier)

Tpt. 2
(Part 2)

Tpt. 2
(Part 2 - Easier)

Hn.
(Part 3)

Hn.
(Part 3 - Easier)

Low W.W./
Low Brass/
Bass
(Part 4)

Cym.

S. D.

B. D.

Timp.

mf *ff* *ff* *ff* *ff* *ff* *ff*

49 50 51 52 53 54 55 56

Invercargill CB088

Flute
 Oboe
 Glock.
 (Part 1)

Fl.
 Oboe
 Glock.
 (Part 1 - Easier)

Cl. 1
 (Part 1)

Cl. 1
 (Part 1 - Easier)

Cl. 2
 (Part 2)

Cl. 2
 (Part 2 - Easier)

Alto Sax. 1
 (Part 2)

Alto Sax. 1
 (Part 2 - Easier)

Alto Sax. 2
 (Part 3)

Alto Sax. 2
 (Part 3 - Easier)

Ten. Sax.
 (Part 3)

Ten. Sax.
 (Part 3 - Easier)

Tpt. 1
 (Part 1)

Tpt. 1
 (Part 1 - Easier)

Tpt. 2
 (Part 2)

Tpt. 2
 (Part 2 - Easier)

Hn.
 (Part 3)

Hn.
 (Part 3 - Easier)

Low W.W./
 Low Brass/
 Bass
 (Part 4)

Cym.

S. D.

B. D.

Timp.

p
p
p
p
p
p
p
p
p
p
p
p
p
p
p
p
p
p
p
p
p
p
p

Flute
Oboe
Glock.
(Part 1)

Fl.
Oboe
Glock.
(Part 1 - Easier)

Cl. 1
(Part 1)

Cl. 1
(Part 1 - Easier)

Cl. 2
(Part 2)

Cl. 2
(Part 2 - Easier)

Alto Sax. 1
(Part 2)

Alto Sax. 1
(Part 2 - Easier)

Alto Sax. 2
(Part 3)

Alto Sax. 2
(Part 3 - Easier)

Ten. Sax.
(Part 3)

Ten. Sax.
(Part 3 - Easier)

Tpt. 1
(Part 1)

Tpt. 1
(Part 1 - Easier)

Tpt. 2
(Part 2)

Tpt. 2
(Part 2 - Easier)

Hn.
(Part 3)

Hn.
(Part 3 - Easier)

Low W.W./
Low Brass/
Bass
(Part 4)

Cym.

S. D.

B. D.

Timp.

f *p* *mp*

Flute
Oboe
Glock.
(Part 1)

Fl.
Oboe
Glock.
(Part 1 - Easier)

Cl. 1
(Part 1)

Cl. 1
(Part 1 - Easier)

Cl. 2
(Part 2)

Cl. 2
(Part 2 - Easier)

Alto Sax. 1
(Part 2)

Alto Sax. 1
(Part 2 - Easier)

Alto Sax. 2
(Part 3)

Alto Sax. 2
(Part 3 - Easier)

Ten. Sax.
(Part 3)

Ten. Sax.
(Part 3 - Easier)

Tpt. 1
(Part 1)

Tpt. 1
(Part 1 - Easier)

Tpt. 2
(Part 2)

Tpt. 2
(Part 2 - Easier)

Hn.
(Part 3)

Hn.
(Part 3 - Easier)

Low W.W./
Low Brass/
Bass
(Part 4)

Cym.

S. D.

B. D.

Timp.

f *p* *f* *p* *f* *p* *f* *p*

4 2

81 82 83 84 85 86 87 88

Flute
Oboe
Glock.
(Part 1)

Fl.
Oboe
Glock.
(Part 1 - Easier)

Cl. 1
(Part 1)

Cl. 1
(Part 1 - Easier)

Cl. 2
(Part 2)

Cl. 2
(Part 2 - Easier)

Alto Sax. 1
(Part 2)

Alto Sax. 1
(Part 2 - Easier)

Alto Sax. 2
(Part 3)

Alto Sax. 2
(Part 3 - Easier)

Ten. Sax.
(Part 3)

Ten. Sax.
(Part 3 - Easier)

Tpt. 1
(Part 1)

Tpt. 1
(Part 1 - Easier)

Tpt. 2
(Part 2)

Tpt. 2
(Part 2 - Easier)

Hn.
(Part 3)

Hn.
(Part 3 - Easier)

Low W.W./
Low Brass/
Bass
(Part 4)

Cym.

S. D.

B. D.

Timp.

f *mp*

4 2 4

89 90 91 92 93 94 95 96

Flute
Oboe
Glock.
(Part 1)

Fl.
Oboe
Glock.
(Part 1 - Easier)

Cl. 1
(Part 1)

Cl. 1
(Part 1 - Easier)

Cl. 2
(Part 2)

Cl. 2
(Part 2 - Easier)

Alto Sax. 1
(Part 2)

Alto Sax. 1
(Part 2 - Easier)

Alto Sax. 2
(Part 3)

Alto Sax. 2
(Part 3 - Easier)

Ten. Sax.
(Part 3)

Ten. Sax.
(Part 3 - Easier)

Tpt. 1
(Part 1)

Tpt. 1
(Part 1 - Easier)

Tpt. 2
(Part 2)

Tpt. 2
(Part 2 - Easier)

Hn.
(Part 3)

Hn.
(Part 3 - Easier)

Low W.W./
Low Brass/
Bass
(Part 4)

Cym.

S. D.

B. D.

Timp.

1.

2.

f

f

f

f

f

f

f

f

f

f

f

f

f

f

f

f

f

f

f

f

f

f

f

f

f

97 98 99 100 101 102 103 104

PREVIEW